

# Bio-based Frame for Eyewear: Odette Lunettes X Tom Boonen Collection



## RILSAN® FINE POWDERS



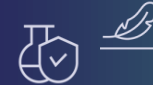
renewable materials from  
castor oil



Recyclable



Lightweight, flexibility,  
chemical and fatigue  
resistance



- Customization
- Freedom of design
- Specific shapes, impossible to produce with other techniques

# Bio-based Frame for Eyewear: Neubau – « La Piscine » Collection



**( ) neubau**  
EYEWEAR

## RILSAN® FINE POWDERS



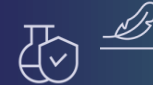
renewable materials from  
castor oil



Recyclable



Lightweight, flexibility,  
chemical and fatigue  
resistance



- Customization
- Freedom of design
- Specific shapes, impossible to produce with other techniques

# Mascara brush



## RILSAN® FINE POWDERS

- Polyamide 11, excellent mechanical properties especially flexibility and fatigue resistance
  - Chemical compatibility with a wide variety of formulas
  - 100% bio-based
- 
- Freedom of design
  - Specific shapes, impossible to produce with other techniques



erpro 3D factory  
DESIGN & ADDITIVE TECHNOLOGIES

# Perfume caps and mascara brushes



## RILSAN® FINE POWDERS

Polyamide 11 is a 100% bio based materials suitable for performance/high resolutions applications

- Excellent mechanical properties especially elasticity and fatigue resistance
- Chemical compatibility with a wide variety of formulas
- Freedom of design for innovative shapes
- Shorten development phase

**ALBÉA**  
packaging and more

# Perfume caps



## RILSAN® FINE POWDERS

- Decorated packaging
- Perfume bottle caps and ornaments, lipstick housing...

- Albéa offer for limited collections, personalization and pre-series

**ALBÉA**  
packaging and more

 **erpro 3D factory**  
DESIGN & ADDITIVE TECHNOLOGIES

# Lightweight Impact Resistance For Landing



## RILSAN® FINE POWDERS

- Polyamide 11: Excellent mechanical properties especially flexibility, chemical and fatigue resistance
  - Customization
  - Freedom of design
  - Specific shapes, impossible to produce with other techniques